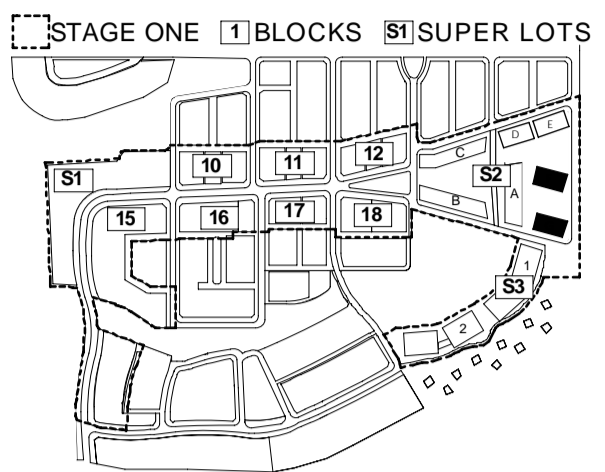


NOTES:
 Builder / Contractor shall verify job dimensions before any job commences.
 Figures dimensions take precedence over drawings and job dimensions.
 All shop drawings shall be submitted to the Architect/Consultant, and manufacture shall not commence prior to return of inspected shop drawings by the Architect/Consultant.



KEY PLAN

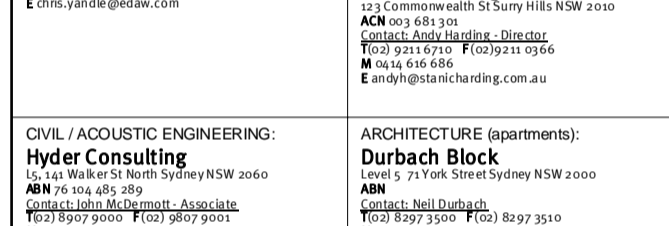
REVISIONS:

| REV. | DESCRIPTION | DATE |
|------|-------------------------------------|----------|
| D | Superlot 2 - Manor Homes submission | -10.08 |
| C | General amendments | 07.08.08 |
| B | CA / PA Issue | 01.02.08 |
| A | Prelim CA/PA Submission | 12.06.07 |

CONSULTANT TEAM

| CONSULTANT | CONTACT |
|---|---|
| PLANNING/LANDSCAPE ARCHITECTURE: | ARCHITECTURE + MASTERPLANNING: |
| EDAW 210 210 210 ACN 015 155 155 www.edaw.com.au | dKO Architecture 1111 MacArthur Street ACN 015 155 155 www.dko.com.au |
| CIVIL / ACOUSTIC ENGINEERING: | ARCHITECTURE (apartments): |
| Hyder Consulting 1111 MacArthur Street ACN 015 155 155 www.hyderconsulting.com.au | Durbach Block 1111 MacArthur Street ACN 015 155 155 www.durbachblock.com.au |
| TRAFFIC & TRANSPORT PLANNING: | BASIX: |
| GTA Consultants 1111 MacArthur Street ACN 015 155 155 www.gtaconsultants.com.au | Damian O'Toole Town Planning 1111 MacArthur Street ACN 015 155 155 www.damianoatoolletownplanning.com.au |
| ECONOMIC ANALYSIS: | FLOOD MANAGEMENT / WSLID: |
| Sphere Property Corporation 1111 MacArthur Street ACN 015 155 155 www.sphereproperty.com.au | Evans & Peck 1111 MacArthur Street ACN 015 155 155 www.evansandpeck.com.au |
| BUSHFIRE HAZARD: | SOILS CAPABILITY: |
| Australian Bushfire Protection Planners 1111 MacArthur Street ACN 015 155 155 www.austbushfireprotection.com.au | Sydney Environmental & Soil Laboratory 1111 MacArthur Street ACN 015 155 155 www.sydneynatural.com.au |
| EUROPEAN HERITAGE: | ECOCLOGY: |
| City Plan Heritage 1111 MacArthur Street ACN 015 155 155 www.cityplanheritage.com.au | Keystone Ecological 1111 MacArthur Street ACN 015 155 155 www.keystoneecological.com.au |
| ACCESSIBILITY CONSULTANT: | INDIGENOUS ARCHAEOLOGY: |
| Morvic Goding Accessibility Consultants 1111 MacArthur Street ACN 015 155 155 www.morvicgoding.com.au | NSW Archaeology Pty Ltd 1111 MacArthur Street ACN 015 155 155 www.nswarchaeology.com.au |

CLIENT:
SILVER SPIRIT PARTNERS



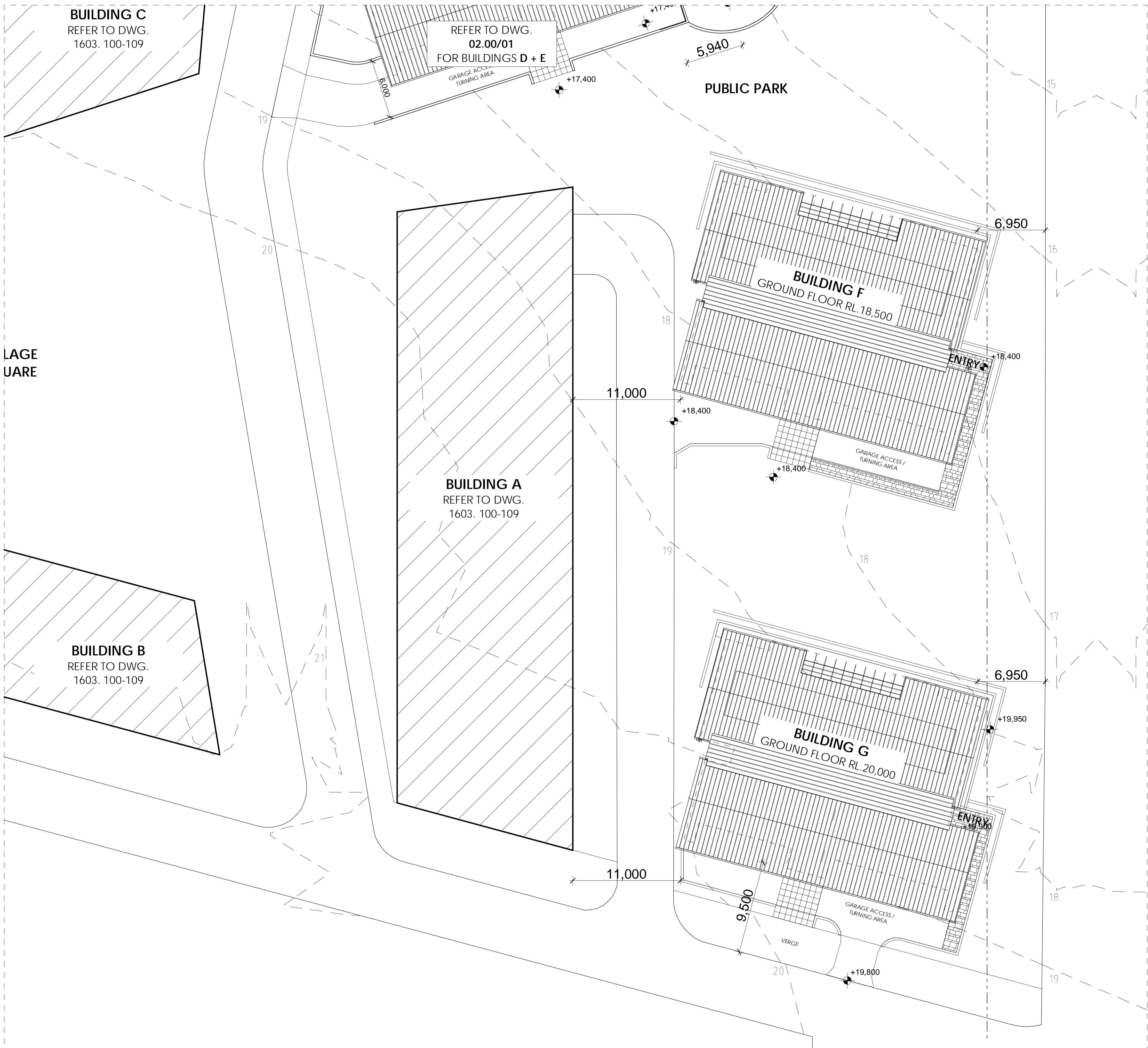
ARCHITECT:
dKO architecture pty. ltd.
 C19 / 38-48 MacArthur Street
 Ultimo NSW 2007 Australia
 TEL +61 2 9280 2244 FAX +61 2 9280 2264
 EMAIL info@dko.com.au ABN 81 956 706 590
 DIRECTORS Kooos de Keijzer, Zvonko Orsanic

PROJECT DETAILS:
 Moruya East Village
 Princes Hwy
 Moruya
 NSW Australia

DRAWING TITLE:
SITE PLAN 2

DRAWN: **BJ** CHECKED: **JK**
 SCALE: **1:200 @ A1** DATE: **12/1/2008**

DRAWING NUMBER: **02.00/02** REV: **D**



LAGE
 UARE

BUILDING C
 REFER TO DWG.
 1603. 100-109

REFER TO DWG.
02.00/01
 FOR BUILDINGS D + E

BUILDING A
 REFER TO DWG.
 1603. 100-109

BUILDING B
 REFER TO DWG.
 1603. 100-109

BUILDING F
 GROUND FLOOR RL. 18,500

BUILDING G
 GROUND FLOOR RL. 20,000

